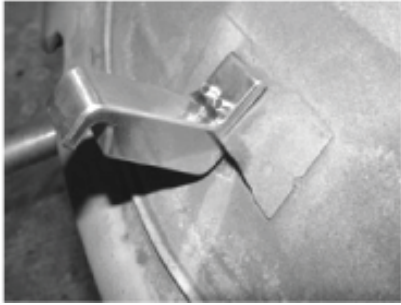


**17-2948 Deck Lid Stand-Off**

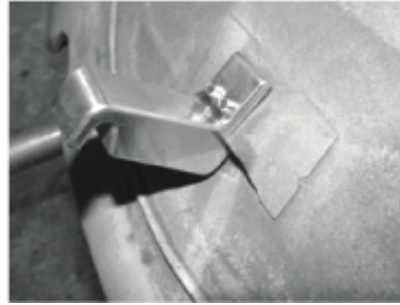
Fits 1964 & Prior. Install on latchbracket as seen in photo. Center and adjust to accommodate deck lid latch then tighten allen studs.



99-4392-0/0715

**17-2948 Deck Lid Stand-Off**

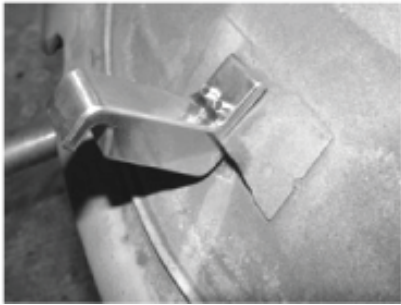
Fits 1964 & Prior. Install on latchbracket as seen in photo. Center and adjust to accommodate deck lid latch then tighten allen studs.



99-4392-0/0715

**17-2948 Deck Lid Stand-Off**

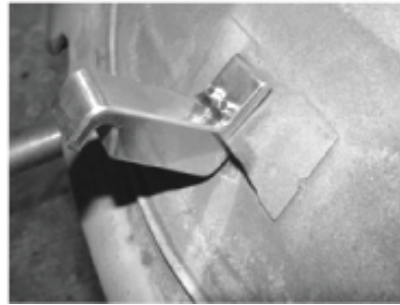
Fits 1964 & Prior. Install on latchbracket as seen in photo. Center and adjust to accommodate deck lid latch then tighten allen studs.



99-4392-0/0715

**17-2948 Deck Lid Stand-Off**

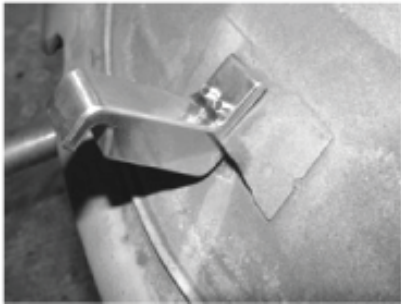
Fits 1964 & Prior. Install on latchbracket as seen in photo. Center and adjust to accommodate deck lid latch then tighten allen studs.



99-4392-0/0715

**17-2948 Deck Lid Stand-Off**

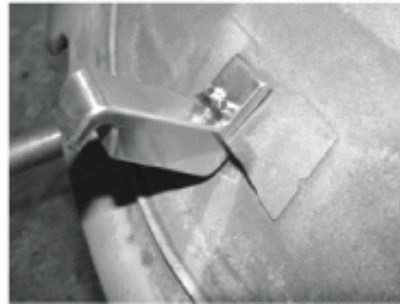
Fits 1964 & Prior. Install on latchbracket as seen in photo. Center and adjust to accommodate deck lid latch then tighten allen studs.



99-4392-0/0715

**17-2948 Deck Lid Stand-Off**

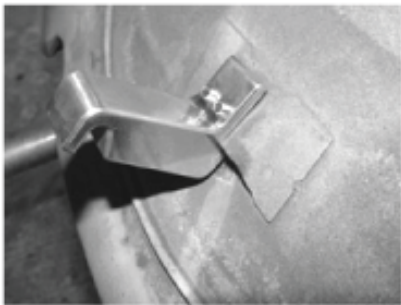
Fits 1964 & Prior. Install on latchbracket as seen in photo. Center and adjust to accommodate deck lid latch then tighten allen studs.



99-4392-0/0715

**17-2948 Deck Lid Stand-Off**

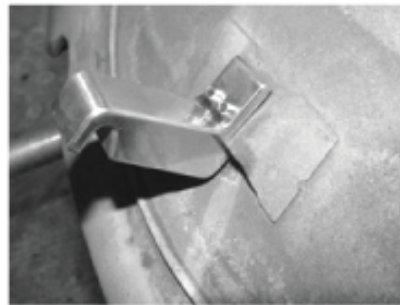
Fits 1964 & Prior. Install on latchbracket as seen in photo. Center and adjust to accommodate deck lid latch then tighten allen studs.



99-4392-0/0715

**17-2948 Deck Lid Stand-Off**

Fits 1964 & Prior. Install on latchbracket as seen in photo. Center and adjust to accommodate deck lid latch then tighten allen studs.



99-4392-0/0715