



Instructions for EMPI #9603, Sway Bar Kit

KIT CONTENTS:

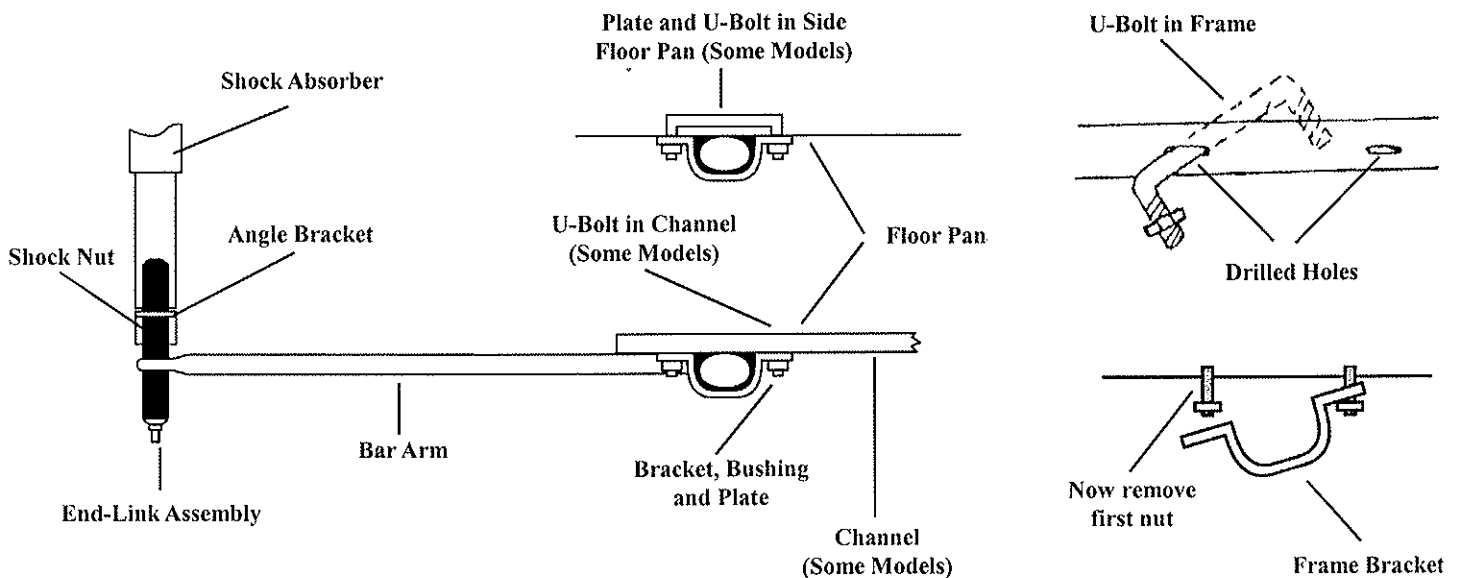
- | | |
|-----------------------|-----------------------|
| (1) Sway Bar | (8) Link Bushings |
| (2) U-Brackets | (8) Cupped Washers |
| (2) L-Brackets | (2) 5/16" Link bolts |
| (2) 3/8" U-Bolts | (4) 3/8" Nylock Nuts |
| (2) Flat Plates | (2) 5/16" Nylock Nuts |
| (2) Sway Bar Bushings | |

PREPARATION:

It is recommended that the front of the car be raised with wheel ramp stands so that front suspension is in its normal loaded position during installation.

INSTALLATIONS:

1. Remove lower front shock nuts and replace the washers with the L-Brackets, install with the horizontal leg positioned above the nut. Tighten nut 22-25 ft. lbs.
2. Install the two sway bar bushings onto the sway bar in the center, out near the bends that form the arms of the sway bar.
3. Using temporary means loosely suspend sway bar from bottom of car. Middle of bar should be facing towards the rear of the car with the arms extending forward.
4. Line up the holes in the sway bar arms with the holes in the L-Brackets and assemble the connecting links as shown in photo 2. Tighten the nuts until the link bushings just start to compress. Do not over tighten and distort the bushings.
5. There are two variations of floor pans used through out production. If your car has two U-channels running the length of the pan skip to step 7. If your pan does not have two U-channels follow step 6 and then skip to step 9.
6. Remove inside front floor coverings. Position the sway bar bushings so the flat sides are against the bottom of the floor pan. Place U-Brackets on each bushing and mark bolt holes in the bottom of the floor pan (Use outermost areas of oval slots in U-Brackets for marking). Remove U-Bracket from bushing, double check marked hole spacing with U-Bolt and drill holes with a 3/8" drill bit. Reinstall the U-Brackets on the bushings and move inside of car, place the flat plate on the floor aligning the holes then insert a U-Bolt through all the components. Install the nylock nuts from the bottom side and tighten equally to 10-ft. lbs. Repeat on other side.
7. Position the sway bar bushings so the flat sides are against the bottom center of each U-channel. Place U-Brackets on each bushing and mark bolt holes on the bottom of each U-channel. (Use outermost areas of oval slots in U-Brackets for marking). Remove U-Bracket from bushing, double check marked hole spacing with U-Bolt and drill holes with a 3/8" drill bit.
8. Reinstall the U-Bracket and place a plate between the U-channel and the U-Bracket be sure all the holes line up. Finger tighten a lock nut on one end of a U-Bolt. Insert the other end up through the U-Bracket and plate up into the U-channel. Maneuver the U-bolt to exit out the opposite hole and through the plate and U-Bracket (elongation of one the holes may be required do to limited space in U-Channel). Install the other lock nut and tighten both equally to 10-ft. lbs. Repeat on the other side.
9. Remove temporary sway bar supports and review your work to be sure all components are correct and tight. Lower car and test-drive to familiarize yourself with changes in handling characteristics.



View From Left Side of Car